

Mouldings



M8588, W510, CS100, BB902, CHM8677-36-BT

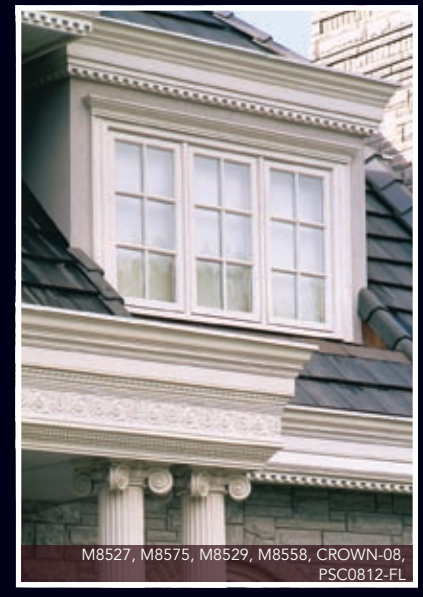
High Density Polyurethane

Chemcrest Inc. offers the largest selection of polyurethane moulding profiles for either Interior or Exterior use. The intricate detail of our patterns, combined with crisp clean lines, is what sets Chemcrest Inc. mouldings apart from the competition.

Chemcrest Inc's mouldings are lightweight and far easier to install than traditional plaster and cast products. It can be cut, nailed and installed just like wood. A factory applied primer is standard on all products, though on site, finishing is required.



C71512
C70714
M8524
M8823



M8527, M8575, M8529, M8558, CROWN-08, PSC0812-FL

CHEMCREST.COM

Mouldings



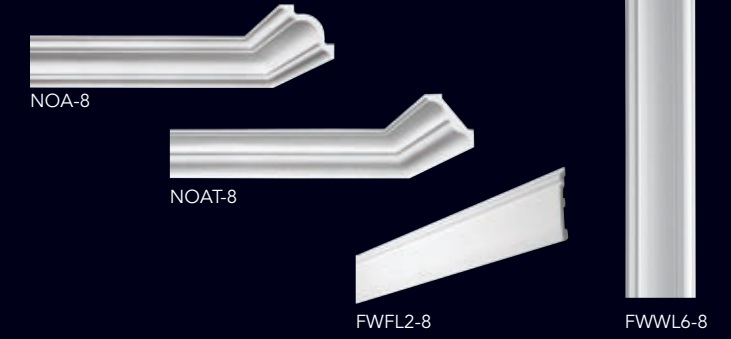
ARAD22, FWFD21

High Density Polystyrene

Anti-bacterial, germ free
Suitable for wet environments
Suitable for health care facilities, hospitals, nursing homes
Suitable for high impact areas

Low Density Polystyrene

Class 'A' Fire Rated
Easy glue and stick technology
Ideal for residential, commercial and hospitality



NOA-8
NOAT-8
FWFL2-8
FWWL6-8

CHEMCREST.COM

Ceiling Elements



RM37544-32

Chemcrest's decorative Ceiling Elements include rings, rosettes, medallions, and beams. Made from high density polyurethane, Chemcrest's medallions are dense but lightweight and easy to install. Crown a dining room or foyer with a highly detailed Chemcrest medallion to ensure a grand statement with or without a lighting fixture.

Consider adding a matching crown mould to further enhance your room décor. Suggestions for matching mouldings with medallions are provided on select medallion styles – or reference Chemcrest's extensive Mouldings section.

Every medallion is manufactured using mould technology that gives each one sharp, crisp undercuts and corners that replicate the wood carved originals. Whatever your application, Chemcrest has a beautiful, highly detailed medallion to suit your particular need.



BM40510, BM41212, BM42321, BMCS1, BMCL1



BM41515
BMCS1
M555

CHEMCREST.COM

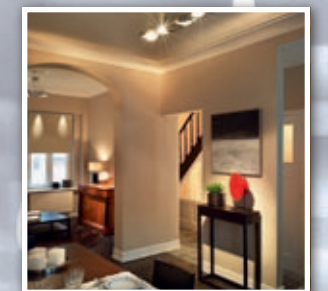
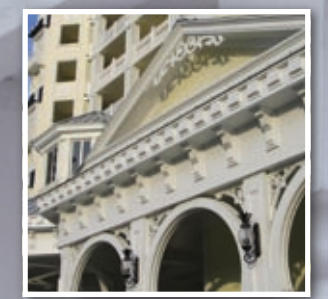
Flex Moulding



Chemcrest Flexible moulding has been designed to conform to radius contours and shaped for both interior and exterior applications. Made of a flexible but highly durable high density polyurethane, this product can be handled like traditional wood. This superior material ensures flexibility, while replacing the features of wood, to meet the most demanding installation needs of today's residential and commercial design specifications.



CHEMCREST.COM



CHEMCREST INC.
chemcrest.com

Interior & Exterior

Millwork

Urethane • PVC • Styrene

Beauty & Practicality

Durability & Value

Tel: 1-800-665-6653
Fax: 1-888-715-1813
info@chemcrest.com
chemcrest.com



Entrance & Window Systems



Decorative Millwork



Louvers & Shutters



Columns



Balustrade Systems



GE0822-ADJ, DB343

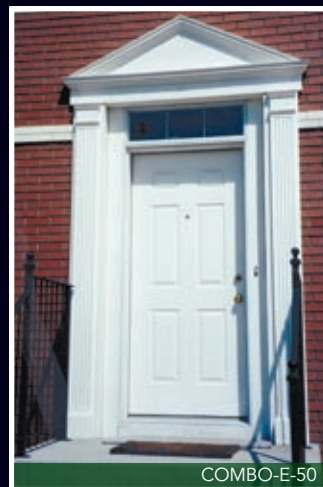
Chemcrest's decorative Window Accents and Door Surrounds give your home a distinctive, value added look.

Choose from a wide selection of combination of crossheads, pediments, sunbursts and pilasters to accentuate your home. Chemcrest also manufactures arched, elliptical, half-round, oval, octagonal and round Window Accents to compliment the design and style of your home or commercial building.

Use Chemcrest Inc.'s Door Surrounds to dress up any doorway or entrance, and create a unique elegant look to your project.

Chemcrest Window Accents and Door Surrounds add a distinctive look to the architectural detail of your home.

From the detailed craftsmanship of each piece to the durability of polyurethane, you will be able to admire Chemcrest's products for years to come.



COMBO-E-50



CH9818



X968K

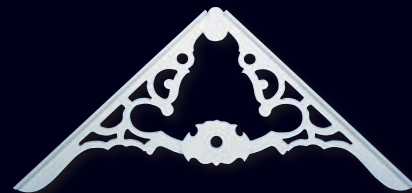


ASK8865-036



GB0930, FSH-OLAP, WB920, GB3032

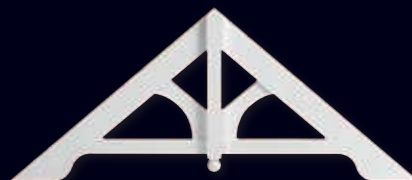
Chemcrest's Decorative Millwork which includes dentil blocks, architectural brackets, gingerbread and gables provide striking detail in both interior and exterior applications. They can be used in combination with other Chemcrest products to give your home or building that architecturally correct look at a fraction of the cost.



V301



WB0523



GB3122-0812



DB466



WB1314



CB0505



WB310



PA1105-F



KSCH09, CH7209, CLRF24-4K

Chemcrest's Shutters & Louvers are available in a large variety of shapes, sizes and textures.

Chemcrest's Louvers are offered in both functional and decorative styling with ease of application and affordability. The functional screened backing allows for the movement of air which is critical for circulation. We can supply the perfect louver for your application.



CLO19



POLA2232



PORL1928



POLT3036



BBS1050-3500

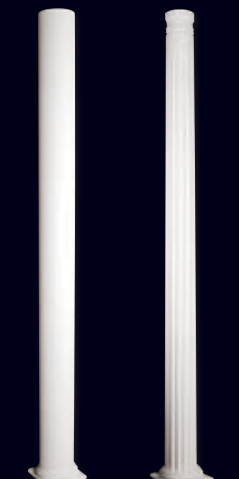


PSC1210-SM, TUSC12, BASE12

Chemcrest Inc., has a vast assortment of PVC and Polyurethane Columns and Capitals available in decorative full, split or knock-down, as well as structural.

Chemcrest's Columns come in a variety of styles: smooth, fluted, paneled, straight, tapered, round and boxed. Add one of our crowns or capitals and bases to further enhance the look.

Decorative columns easily conceal existing unsightly support posts or pipes already in place. In every case, Chemcrest Inc.'s columns and porch posts are more durable than wood.



PSC0608-SM PSC0808-TAP-FL



KDC3100-1606



PSC0808-FL



CR2424-F



CROWN-08



TUSC-06



BR7500-10, BR7510-10, BP4808-P, BA08-B



B7328

Adding a Balustrade System to your project is an inexpensive way to recreate the timeless elegance of historical design. The Chemcrest balustrade program is a comprehensive, easy to specify, and easy to install system of balusters, rails, newel posts, balls and caps, and accessories. Our balustrade components utilize heavy duty P.V.C. and/or steel reinforcing in order to meet our strict quality standards.



NP7000, B7022, R7096-T, R7096-B, P106, NPC8