

Siparila Topcoat® Siding



Installation Instruction

Siparila Topcoat® is a high quality exterior siding that is primed on all four sides. With all visible surfaces coated, Siparila Topcoat® wood siding stays strong and beautiful; blind fastening completes the modern look with a clean finish. Siparila Topcoat® siding ships ready to use and does not require further treatments once on the construction site, making it suited for both new construction and renovation.

Please Note!

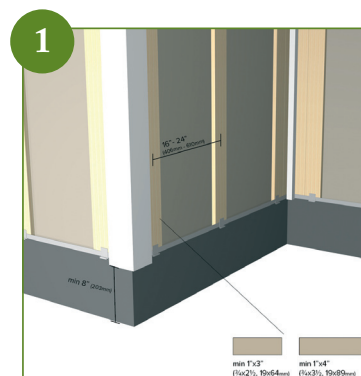
As Siparila Topcoat® exterior siding products ship fully finished, one must exercise caution to avoid damaging the painted surfaces during installation. All damages to the painted surfaces, cuts, and/or bare wood should be painted with Siparila touch-up paint. Siparila Topcoat® siding accessories (e.g. corner pieces, etc.) must be fastened with nails and any visible nail heads should be painted with Siparila Topcoat® touch-up paint (available from your supplier).

1. HORIZONTAL SIDING INSTALLATION

1.1 Horizontal siding - vertical furring strips (1 x 4" and 1 x 3")

The furring strips for the siding should be fixed vertically to the frame of the building at a maximum distance of 24" (610 mm) on centre. When using 1x3" furring strips the interval should be a maximum 16" (406 mm) on centre. Corner furring should be 1 x 4".

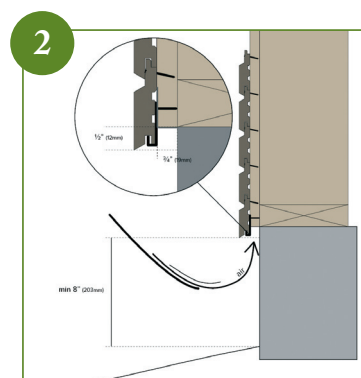
See *picture 1*.



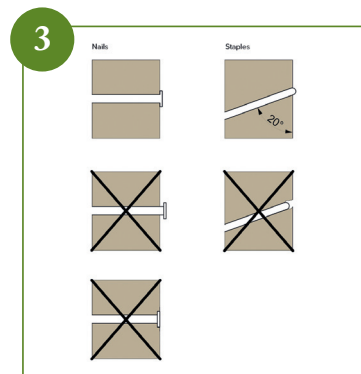
1.2 Starting the Installation

A horizontal profile can be started with a metal starter trim. Use a level to make sure the starter trim is straight. Using a metal starter trim allows the first row of Siparila Topcoat® siding to be installed without any visible fasteners. The first row of Siparila Topcoat® siding should be at least 8" (203 mm) from the ground level. Please note that the siding must never touch the ground. See *picture 2*.

The siding must be installed over furring strips to ensure airflow, allowing for moisture drainage and reducing the risk of premature aging. A 3/4" (19 mm) ventilation duct must be left between the siding and the building; please refer to local building codes to verify ventilation duct guidelines. The ventilation duct must be open and unobstructed to encourage air circulation. The bottom edge of the starter trim should project 1/2" (12 mm) below the bottom of the furring strips. See attached picture.

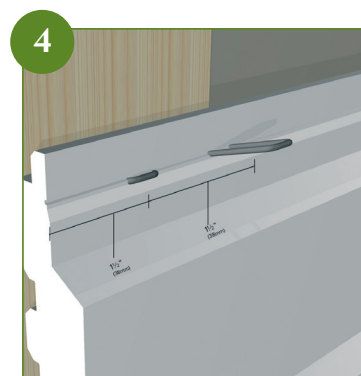


When attaching the exterior siding or trims make sure that the staple or nail heads do not sink too deep and damage the panel surface.



1.3 Fastening with staples

Siparila Topcoat® siding should be installed with staples. Siparila Topcoat® siding should be installed with staples. Siparila Topcoat® siding is attached at the fastening line with one staple (if using interval 406 mm/ 16") or two staples (if using interval 610 mm/ 24") on each furring strip. Resin-coated stainless steel staples should measure 2 x7/16 (11 x 50 mm). If using two staples, the distance between staples should be about 1 1/2 (38 mm) on centre. The fastening distance from the panel head must be at least 1 1/2 (38 mm) in order to prevent cracking. *See picture 4.*



When fastening siding, always press the board firmly against the furring strip. Staples must be positioned directly along the fastening line indicated on the board's profile. Installing the staple above this line may cause the tongue to crack. Staples installed below the line will be visible on the wall.

2 VERTICAL SIDING INSTALLATION

2.1 Vertical siding - furring strips diagonal

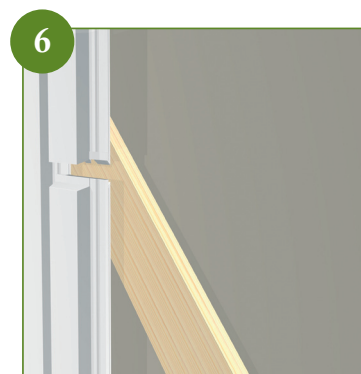
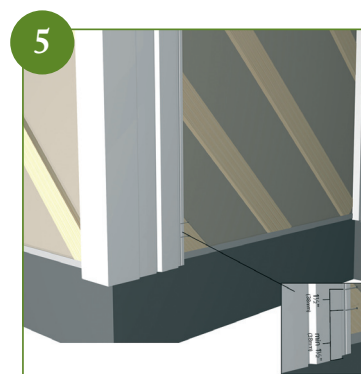
Install furring strips diagonally at a distance of 12" or 18" (300 or 457 mm) on centre at a 45 degree angle. It is advisable to use 1 x 4" furring for 18" on centres and 1 x 3" furring strips 12" on centres. *See picture 5.*

2.2 Starting the installation

Start the installation from the bottom corner moving from left to right and from the bottom up. The board must be installed with the end-joint tongue facing upward so that water cannot infiltrate the joint. Always use a spirit level to ensure proper installation. *See picture 6.*

The base of the building should be measured so that the siding is no closer than 8" (203 mm) from the ground level. Please keep in mind that the siding must never touch the ground.

The siding must be installed over furring strips to ensure airflow, allowing for moisture drainage and reducing the risk of premature aging. The siding must be installed over furring strips to ensure airflow, allowing for moisture drainage and reducing the risk of premature aging. A 3/4" (19 mm) ventilation duct must be left between the siding and the building; please refer to local building codes to verify ventilation duct guidelines. The ventilation duct must be open and unobstructed to encourage air circulation.



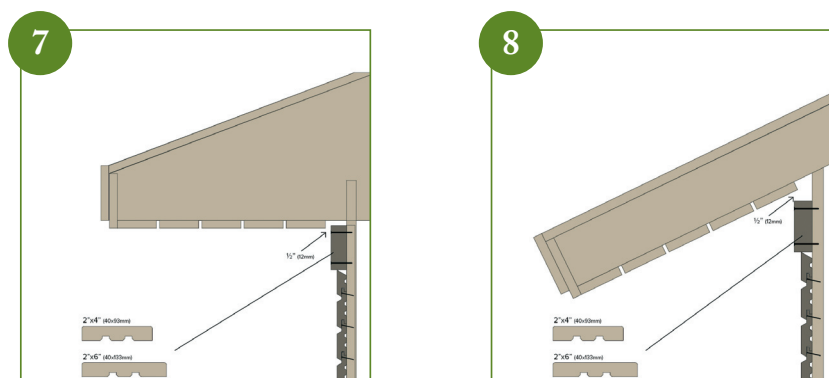
2.3 Fastening with staples

Siparila Topcoat® siding should be installed with staples. Siparila Topcoat® siding is attached at the fastening line with one staple (if using 3" furring strip) or two staples (if using 4" furring strip) on each furring strip. Resin-coated stainless steel staples should measure 2"x7/16" (11 x 50 mm). If using two staples, the distance between staples should be about 1 1/2" (38 mm) on centre. The fastening distance from the panel head must be at least 1 1/2" (38 mm) in order to prevent cracking. *See picture 5.*

When fastening siding, always press the board firmly against the furring strip. Staples must be positioned directly along the fastening line indicated on the board's profile. Installing the staple above this line may cause the tongue to crack. Staples installed below the line will be visible on the wall.

3. TOP OF WALL

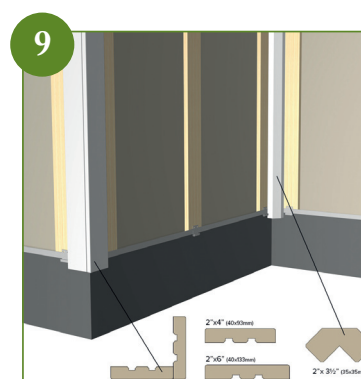
There are different ways to finish the top of a wall. The eaves effectively protect the siding from the rain. The recommended minimum width of the eaves is 12" (304 mm). The underside of the roof and the siding must have a uniform ventilation duct with a minimum width of 1/2" (12 mm). This allows for air circulation in the ventilation duct. *See picture 7 and 8.*



4. CORNER TRIMS

Siparila has different solutions for finishing the outside and inside corners. Regardless of the solution you choose, it is recommended that your corner trims are fastened using full round head hot-dipped galvanized nails, minimum length is 2 1/2". The nail head must not sink into the wood but sit flush on the surface.

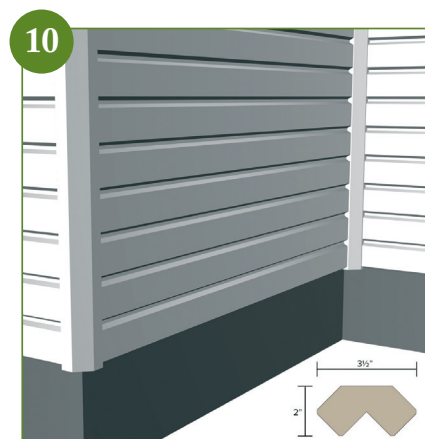
Always use Siparila Topcoat® corner trims to ensure the durability of the building and remember to paint all nail heads with Siparila Topcoat® touch-up paint after installation. This will make your siding more durable.



When you install siding next to the corner trim, remember to cut end-joint off and paint the resulting bare wood with touch-up paint.

Outside and inside corners: One solution is to use 4", 5" and 6" trims in the corner. All corner trim boards should be installed before the siding and should be attached to the furring strip with nails. Remember that nail heads must be painted with Siparila Topcoat® touch-up paint. *See picture 9.*

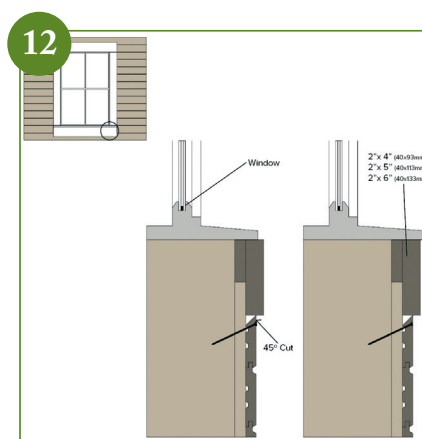
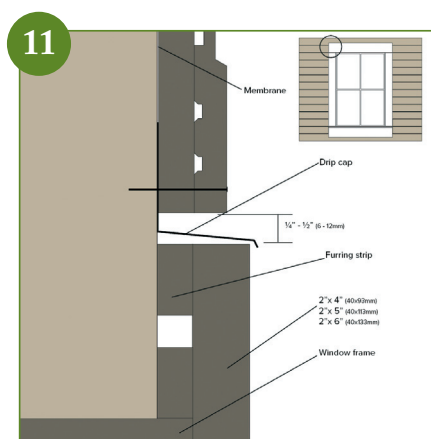
Universal corner: Siparila universal corner 2" x 3 ½" can be used for both inside and outside corners. Universal corner trim should be installed before the siding panels. Remember that nail heads must be painted with Siparila Topcoat® touch-up paint. *See picture 10.*



5. WINDOW AND DOOR FINISH DETAILS

Siding must be installed after the window or door trims are installed. You can use 2x4", 2x5", 2x6" trims. A steel drip cap is essential to avoiding water infiltration and must be installed so that it covers the whole trim. There must be between ¼" and ½" (6 mm to 12 mm) of ventilation space between the siding and the drip cap for effective water drainage. *See picture 11.*

To make siding installation easier under windows, cut the siding panels at a 45 degree angel. This allows the panels to easily slide into place. *See picture 12.*



6. DORMER AND OF JUNCTION FINISH DETAILS

The siding must be spaced at least 2" (51 mm) from the roof surface (i.e. siding panels should not touch the roof). This spacing protects the siding by creating a channel wide enough to allow water to drain properly. This will also prevent the build-up of ice against the siding.

SIPARILA

Varaslahdentie 1, 40800 Vaajakoski, Finland
Tel. +358 10 4242 000, fax. +358 10 4242 050
www.siparila.com